

EPS IN FIGURES

INSTALLED CAPACITY OF POWER GENERATING FACILITIES	8 355 MW
OF WHICH:	
COAL-FIRED THERMAL POWER PLANTS	5 171 MW
THERMAL POWER PLANTS-HEATING PLANTS	353 MW
RUN-OF-RIVER HYDRO-POWER PLANTS	1 849 MW
HYDRO-POWER PLANTS WITH RESERVOIR	368 MW
PUMPED-STORAGE POWER PLANT	614 MW
TOTAL POWER GENERATION OF EPS POWER PLANTS	38 897 GWh
THERMAL POWER PLANTS	28 967 GWh
HYDRO-POWER PLANTS	9 930 GWh
GROSS POWER CONSUMPTION IN SERBIA	37 785 GWh
TOTAL COAL PRODUCTION (KOSMET NOT INCLUDED)	36 506 746 t
TOTAL OVERBURDEN REMOVAL PRODUCTION (KOSMET NOT INCLUDED)	108 044 429 m³sm
ELECTRICITY DISTRIBUTION (KOSMET NOT INCLUDED)	
TOTAL NUMBER OF CUSTOMERS	3 376 102
AT HIGH AND MEDIUM VOLTAGE	3 778
AT LOW VOLTAGE	3 372 324
THE AMOUNT OF 28 749 GWh OF ELECTRICITY SOLD	
THE LARGEST SHARE IN POWER CONSUMPTION - HOUSEHOLDS 52.45%	

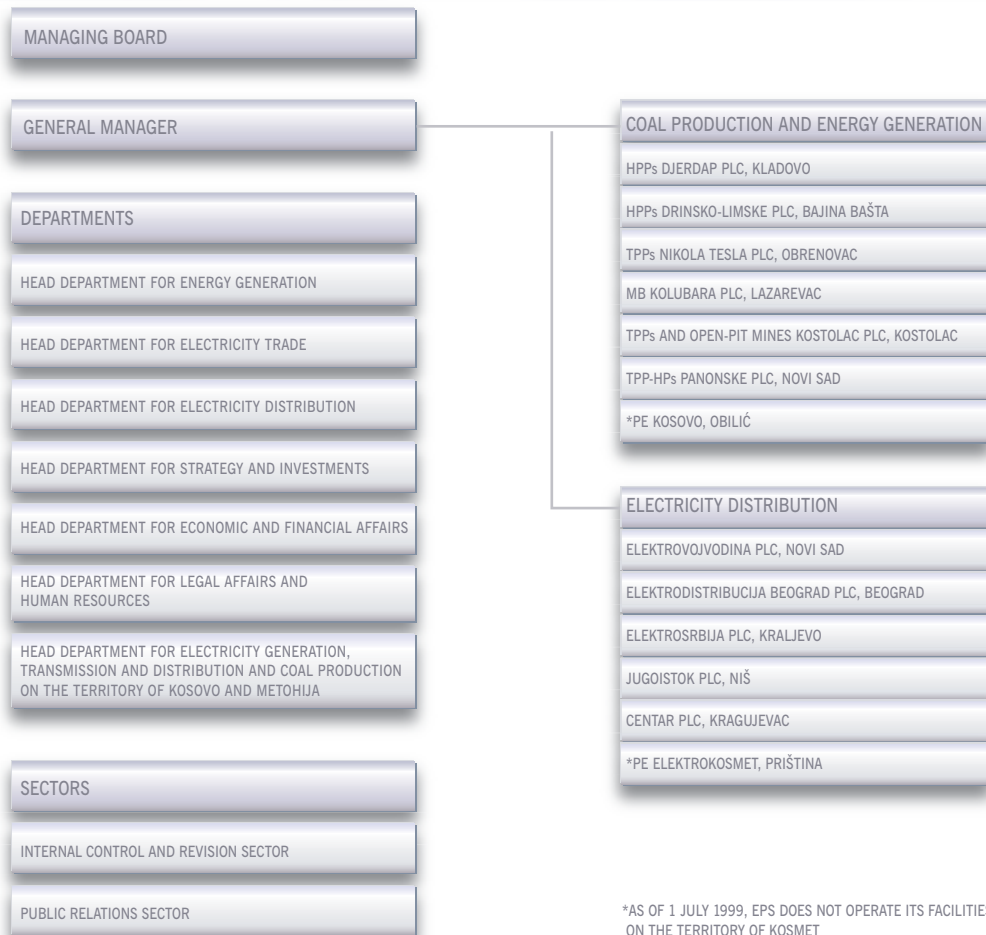
POWER GENERATING FACILITIES

POWER PLANT	NET OUTPUT CAPACITY (MW)
TPP NIKOLA TESLA A	1 502
TPP NIKOLA TESLA B	1 160
TPP KOLUBARA	245
TPP MORAVA	108
TPP KOSTOLAC A	281
TPP KOSTOLAC B	640
TPP KOSOVO A	617
TPP KOSOVO B	618
THERMAL POWER PLANTS	5 171
TPP-HP NOVI SAD	208
TPP-HP ZRENJANIN	100
TPP-HP SREMSKA MITROVICA	45
THERMAL POWER PLANTS - HEATING PLANTS	353
HPP DJERDAP I	1 058
HPP DJERDAP II	270
HPP VLASINA	129
HPP PIROT	80
HPP BAJINA BAŠTA	364
PUMPED-STORAGE PP B. BAŠTA	614
HPP ZVORNIK	92
HPP ELEKTROMORAVA	13
HPP LIMSKE	211
HYDRO-POWER PLANTS	2 831
POWER PLANTS OWNED BY EPS	8 355
HPP PIVA	342
HPP GAZIVODE	35
OTHER POWER PLANTS	377
TOTAL	8 732

2007 ELECTRIC POWER INDUSTRY OF SERBIA



ORGANIZATIONAL STRUCTURE OF THE PUBLIC ENTERPRISE ELECTRIC POWER INDUSTRY OF SERBIA



IDENTITY CARD OF PE EPS

TITLE	PUBLIC ENTERPRISE "ELECTRIC POWER INDUSTRY OF SERBIA"
ABBREVIATION	PE EPS
MAIN OFFICE	11000 BELGRADE, CARICE MILICE 2
PHONE	+ 381 (0) 11 20 24 600
FAX	+ 381 (0) 11 26 27 160
E-MAIL	EPS@EPS.CO.YU
WEBSITE	WWW.EPS.CO.YU
REGISTRATION	DECISION BD 80380/2005 WITH THE SERBIAN BUSINESS REGISTERS AGENCY
REGISTRATION NUMBER	20053658
PIN	103920327
CHAIRMAN OF THE BOARD OF DIRECTORS	JEROSLAV M. ŽIVANIĆ, PhD
GENERAL MANAGER	VLADIMIR DJORDJEVIĆ, PhD

*AS OF 1 JULY 1999, EPS DOES NOT OPERATE ITS FACILITIES ON THE TERRITORY OF KOSMET