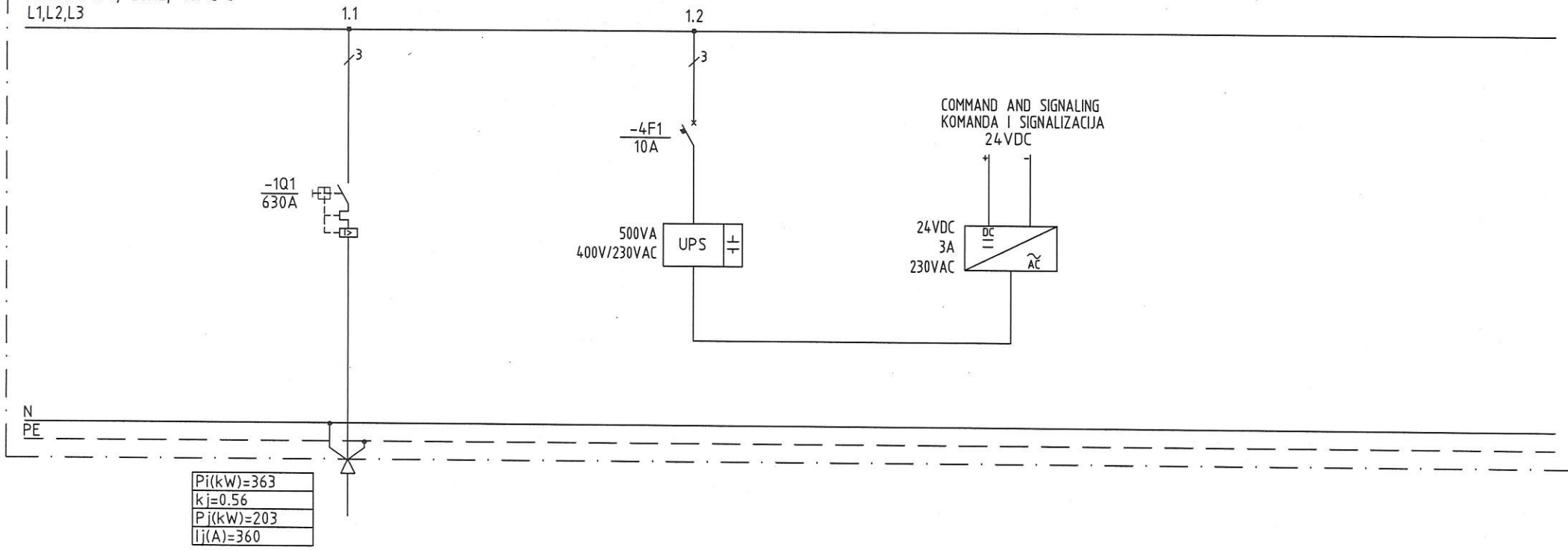


3x420/240V, 50Hz, TN-C-S  
L1,L2,L3



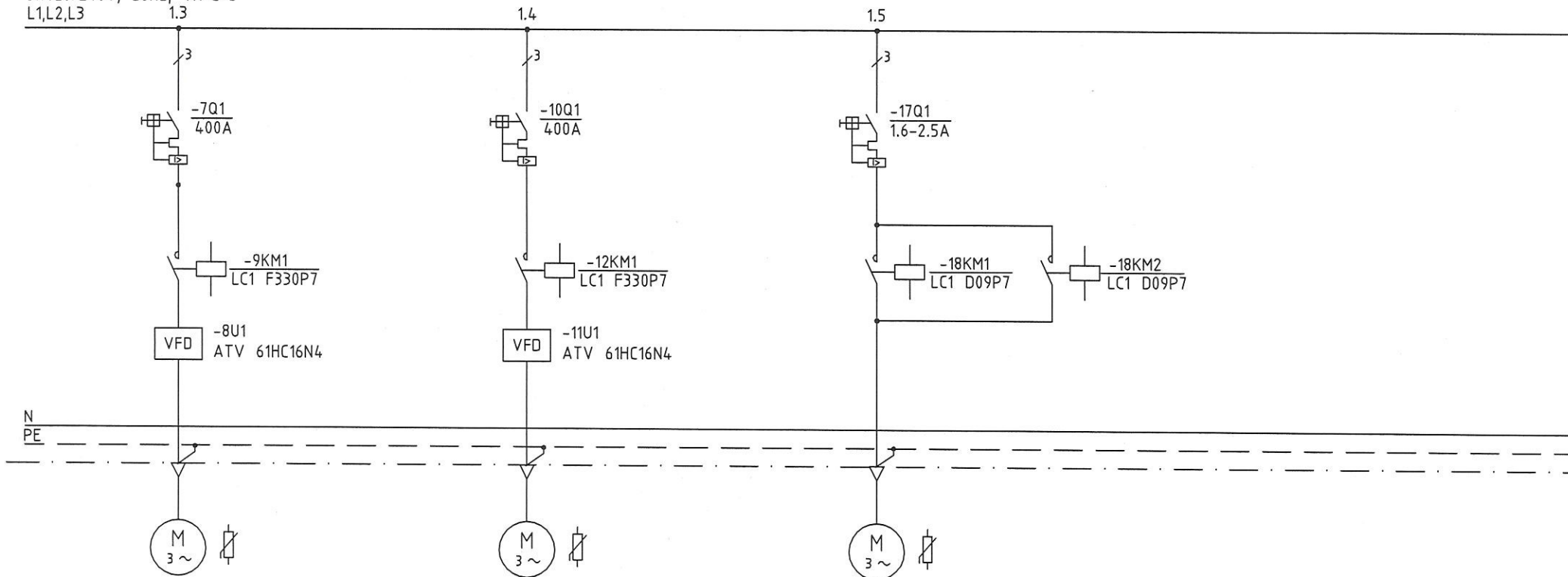
Pi(kW)=363
Kj=0.56
Pj(kW)=203
Ij(A)=360

P	I			500 VA						
Tip			COMPACT NSX630N	iC60N						
Velicina			MICROLOGIC 5.2 A	10A						
Postrojenje				-						
Lokalno				-						
Kabl-br.			-WE1+TS+0BH03; +WE2+TS+0BH03							
Kabl-tip			4x(2x(PP00 1x185)) + PP00-Y 1x150							
Pagon-br.			0.4kV Switchboard Return Water Transfer System - Feeder							
			0.4kV Razvodna tabla Sistem Transporta Povratne Vode - Dovod							

+0BH03

C		Ime/Name	Datum/Date	Ugovarač / Contractor	Naziv projekta / Project description	Investitor / Client	Projektant / Designer	Naziv crteža / Description	Jednopolna šema / Single Line Diagram	
B				Clyde Bergemann DRYCON Gosa Montaza	Zamena sistema za odlaganje pepela / Replacement of Ash Slurry System TE Kostolac A	Elektroprivreda Srbije Korisnik / User TE Kostolac A	IKS Institut "Kirilo Savić"	Knjiga / Volume : E 5 Svesk./Book : E5.1.2	Broj priloga / Dwg.No. 2.1	List / Listova Page / Pages 1/3
A										
Ind	Revizija / Revision									

3x420/240V, 50Hz, TN-C-S  
L1,L2,L3

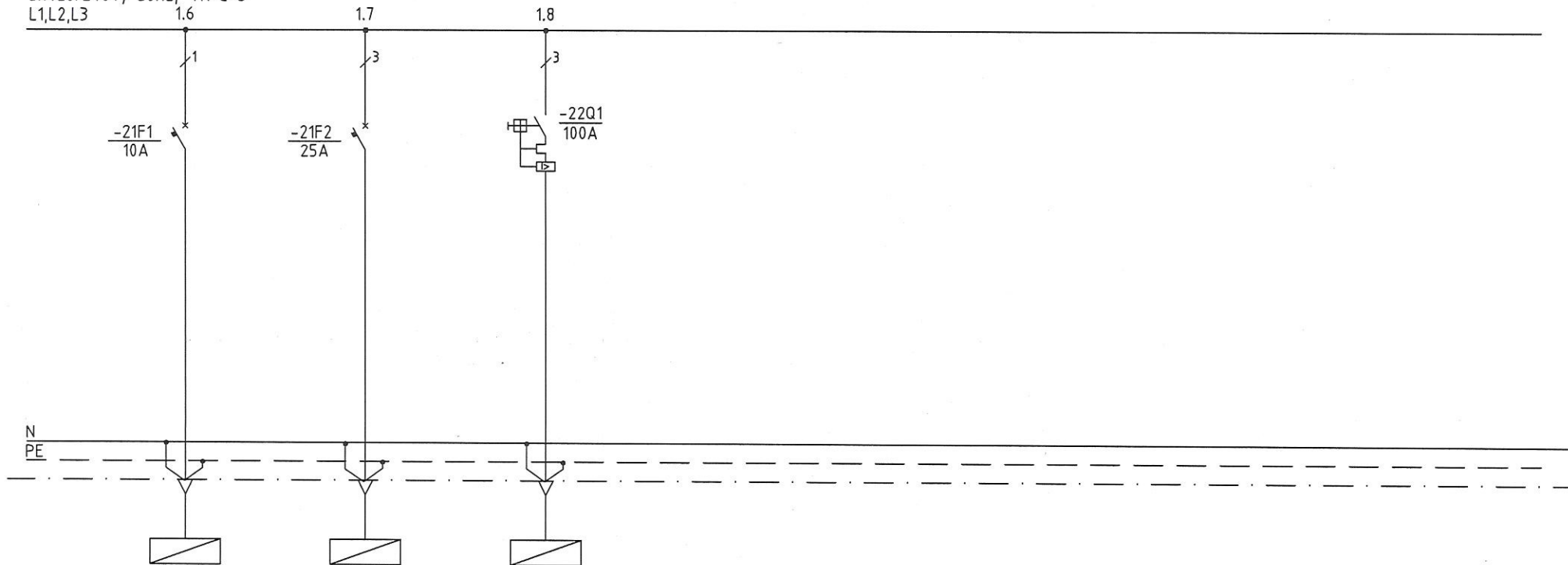


P	I	160 kW	270 A		160 kW	270 A		0.75 kW	1,81 A				
Tip		COMPACT NSX400F			COMPACT NSX400F			GV2 P					
Velicina		Micrologic 2.3 M			Micrologic 2.3 M			GV2 P07					
Polje		-			-			-					
Kaseta		-			-			-					
Kabl-br.		-WE+0BH03+D011			-WE+0BH03+D012			-WE+0BH03+SPV01					
Kabl-tip		PP00-Y 4x185			PP00-Y 4x185			PP00-Y 4x1.5					
Pogon-br.		00TJ50D011-M01			00TJ50D012-M01			00TJ50SPV01-M01					
		Return Water Transfer Pump No.1			Return Water Transfer Pump No.2			Butterfly insulating valve With Motor Drive					
		Potisna Pampa Povratne Vode Br.1			Potisna Pampa Povratne Vode Br.2			Leptirasti Izolacioni Ventil Na Motorni Pogon					

+0BH03  
/

C	B	A	Ind	Ime/Name	Datum/Date	Ugovarač / Contractor	Naziv projekta / Project description	Investitor / Client	Projektant / Designer	Naziv crteža / Description	Jednopolna šema / Single Line Diagram	Broj priloga / Dwg.No.	List / Listova Page / Pages
						Clyde Bergemann DRYCON Gosa Montaza	Zamena sistema za odlaganje pepela / Replacement of Ash Slurry System TE Kostolac A	Elektroprivreda Srbije Korisnik / User	TE Kostolac A	IKS Institut "Kirilo Savi Ć"		2.1	2/3
				Revizija / Revision						Knjiga / Volume : E 5 Svesk./Book : E5.1.2			

3x420/240V, 50Hz, TN-C-S  
L1,L2,L3

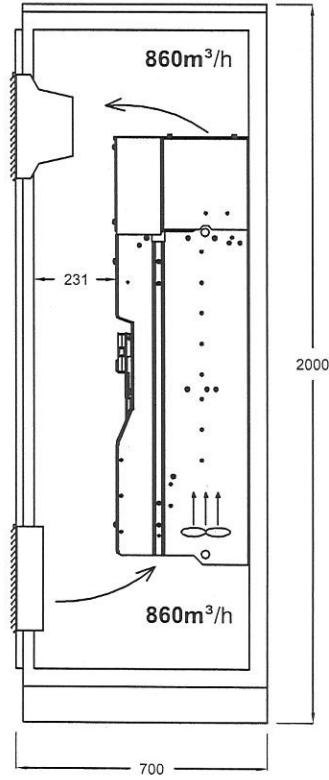
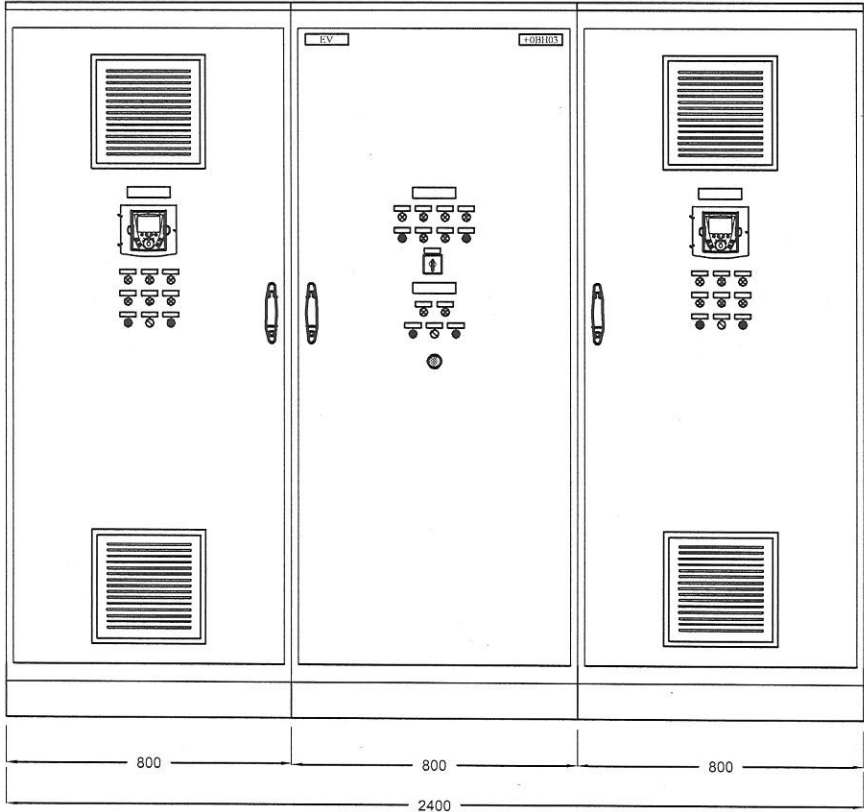


P	I	0.75 kW	3.5 A	7.47 kW	10.50	33.5 kW	60 A
Tip	iC60N			iC60N		COMPACT NSX100F	
Velicina	10A			25A		Micrologic 2.2 M	
Polje	-			-		-	
Kaseta	-			-		-	
Kabl-br.	-WE+0BH03+0AP02			-WE+0BH03+0P		-WE1+0BH03+0BH04; -WE2+0BH03+0BH04	
Kabl-tip	PP00-Y 3x2.5			PP00-Y 5x4		PP00 4x50 + PP00-Y 1x25	
Pogon-br.	+0AP02			+RO-OP		+0BH04	
	PLC Cubicle Return Water System Orman Automatike Sistem Povratne Vode			64 Pole MCB Distribution Board Razvodni Orman Opste Potrosnje		0.4kV Switchboard Return Water Collection Bund 0.4kV Razvodna tabla Prikupljanje Povratne Vode	

+0BH03  
/

C	B	A	Ind	Ime/Name	Datum/Date	Ugovarač / Contractor	Naziv projekta / Project description	Investitor / Client	Projektant / Designer	Naziv crteža / Description	Jednopolna šema / Single Line Diagram	
						Clyde Bergemann DRYCON Gosa Montaza	Zamena sistema za odlaganje pepela / Replacement of Ash Slurry System TE Kostolac A	Elektroprivreda Srbije Korisnik / User	<b>IKS</b> Institut "Kirilo Savić"	Knjiga / Volume : E 5 Svesk./Book : E5.1.2	Broj priloga / Dwg.No. 2.1	List / Listova Page / Pages 3/3
				Revizija / Revision				TE Kostolac A				

1 2 3 4 5 6 7 8



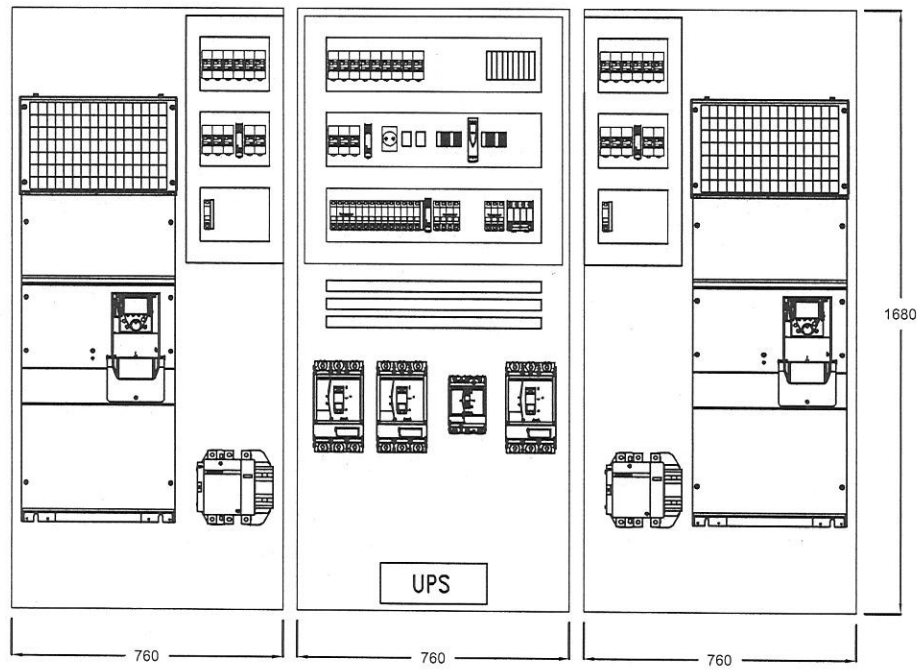
OPŠTI PODATCI O POSTROJENJU		
TIP	SLOBODNOSTOJEĆE FIKSNO EV-C1R007	
VISINA	2000mm	
ŠIRINA	2400mm	
DUBINA	700mm	
DOVOD	DOLE	
KONEKCIJA	DOLE	
ENERGET.	FAZE	--
SABIRNICE	N/PF	---/---
In	630 A	
Iks	50 kA	
Un	400V	
f	50Hz	
temp.amb	35 °C	
IP	54	

+0BH03  
/

C		Ime/Name	Datum/Date	Ugovarač / Contractor	Naziv projekta / Project description	Investitor / Client	Projektant / Designer	Naziv crteža / Description	Prednji izgled + 0BH03 Front view + 0BH03
B				Clyde Bergemann DRYCON Gosa Montaza	Zamena sistema za odlaganje pepela / Replacement of Ash Slurry System TE Kostolac A	Elektroprivreda Srbije Korisnik / User TE Kostolac A	IKS Institut "Kirilo Savi ć"	Knjiga / Volume : E5 Svesk./Book : E.5.1.2	Broj priloga / Dwg.No. 4.1
A									
Ind	Revizija / Revision								

1 2 3 4 5 6 7 8

1 2 3 4 5 6 7 8



OPŠTI PODATCI O POSTROJENJU		
TIP	SLOBODNOSTOJEĆE FIKSNO EV-C1R007	
VISINA	2000mm	
ŠIRINA	2400mm	
DUBINA	700mm	
DOVOD	DOLE	
KONEKCIJA	DOLE	
ENERGET.	FAZE	--
SABIRNICE	N/PF	--/--
In	630 A	
Iks	50 kA	
Un	400V	
f	50Hz	
temp.amb	35 °C	
IP	54	

										+0BH03	
C		Ime/Name	Datum/Date	Ugovarač / Contractor	Naziv projekta / Project description	Investitor / Client	Projektant / Designer	Naziv crteža / Description	Dispozicija opreme +0BH03 Disposition of equipment +0BH03		
B				Clyde Bergemann DRYCON Gosa Montaza	Zamena sistema za odlaganje pepela / Replacement of Ash Slurry System TE Kostolac A	Elektroprivreda Srbije Korisnik / User	IKS Institut "Kirilo Savi ć"	Knjiga / Volume : E5 Svesk./Book : E5.1.2	Broj priloga / Dwg.No. 4.2	List / Listova Page / Pages	1/1
A											
Ind	Revizija / Revision										

1 2 3 4 5 6 7 8