

# ELECTRIC POWER INDUSTRY OF SERBIA



TECHNICAL REPORT

# 2010

### GENERATION CAPACITIES

net output capacity

Kosovo and Metohija not included **7,124** MW

Kosovo and Metohija included **8,359** MW\*

### ELECTRICITY GENERATION

Kosovo and Metohija not included **35,855** GWh

Kosovo and Metohija included **40,980** GWh

### COAL PRODUCTION

Kosovo and Metohija not included **37,195,145** t

### OVERBURDEN REMOVAL

Kosovo and Metohija not included **95,781,419** bcm

### EPS GROSS CONSUMPTION

Kosovo and Metohija not included **34,073** GWh

Kosovo and Metohija included **39,819** GWh

### FINAL ELECTRICITY CONSUMPTION

Kosovo and Metohija not included **28,051** GWh

### NUMBER OF CUSTOMERS

Kosovo and Metohija not included

Total **3,499,358**

At high and middle voltage **4,033**

At low voltage **3,495,325**

POWER PLANT	Net output capacity MW
TPP Nikola Tesla A	1,502
TPP Nikola Tesla B	1,160
TPP Kolubara	245
TPP Morava	108
TPP Kostolac A	281
TPP Kostolac B	640
TPP Kosovo A*	617
TPP Kosovo B*	618
<b>THERMAL Power Plants</b>	<b>5,171</b>
CHP Novi Sad	208
CHP Zrenjanin	100
CHP Sremska Mitrovica	45
<b>COMBINED Heat and Power Plants</b>	<b>353</b>
HPP Đerdap 1	1,058
HPP Đerdap 2	270
Vlasinske HPPs	129
HPP Pirot	80
HPP Bajina Bašta	364
PSHPP Bajina Bašta	614
HPP Zvornik	96
HPP Elektromorava	13
HPP Potpeć	51
HPP Bistrica	102
HPP Kokin Brod	22
HPP Uvac	36
<b>HYDRO Power Plants</b>	<b>2,835</b>
<b>EPS POWER PLANTS</b>	<b>8,359</b>

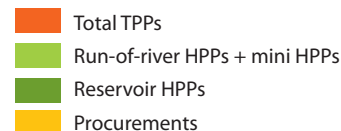
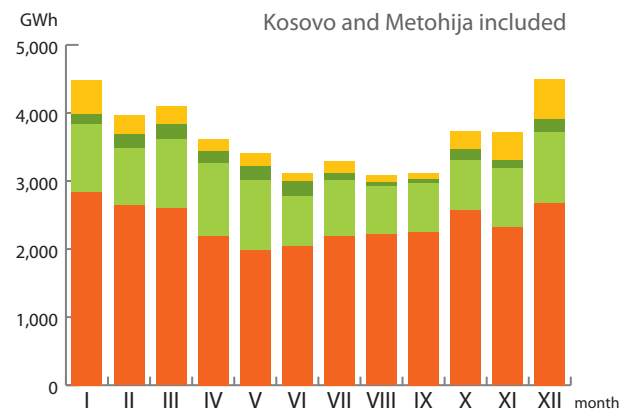
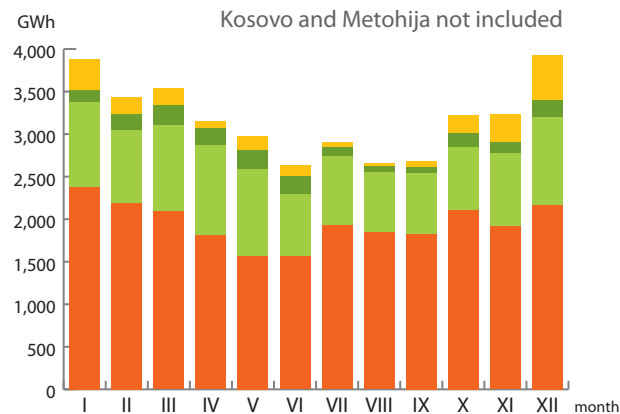
\* As of June 1999, EPS does not operate its facilities on the territory of Kosovo and Metohija

## EPS ELECTRICITY GENERATION

POWER PLANT	GWh
TPP Nikola Tesla A	8,581
TPP Nikola Tesla B	8,113
TPP Kolubara	1,081
TPP Morava	578
TPP Kostolac A	1,888
TPP Kostolac B	2,921
TPP Kosovo A*	1,854
TPP Kosovo B*	3,271
<b>THERMAL Power Plants</b>	<b>28,287</b>
CHP Novi Sad	209
CHP Zrenjanin	12
CHP Sremska Mitrovica	1
<b>COMBINED Heat and Power Plants</b>	<b>222</b>
HPP Đerdap 1	6,387
HPP Đerdap 2	1,551
Vlasinske HPPs	462
HPP Pirot	212
HPP Bajina Bašta	1,677
PSHPP Bajina Bašta	680
HPP Zvornik	575
HPP Elektromorava	71
HPP Potpeć	248
HPP Bistrica	413
HPP Kokin Brod	75
HPP Uvac	68
Mini HPP	52
<b>HYDRO Power Plants</b>	<b>12,471</b>
<b>TOTAL</b>	<b>40,980</b>

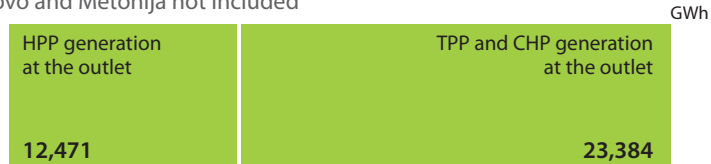
## AVAILABLE ENERGY

### MONTHLY GENERATION AND PROCUREMENTS



## ACHIEVED ELECTRIC POWER BALANCE

Kosovo and Metohija not included

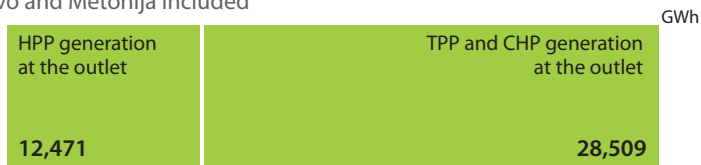


Total EPS generation at the outlet 35,855



Pumping (PSHPP B.Bašta and PSP Lisina needs) 1,049

Kosovo and Metohija included



Total EPS generation at the outlet 40,980



Pumping (PSHPP B.Bašta and PSP Lisina needs) 1,049

## MAXIMUM PEAKLOAD

Kosovo and Metohija not included

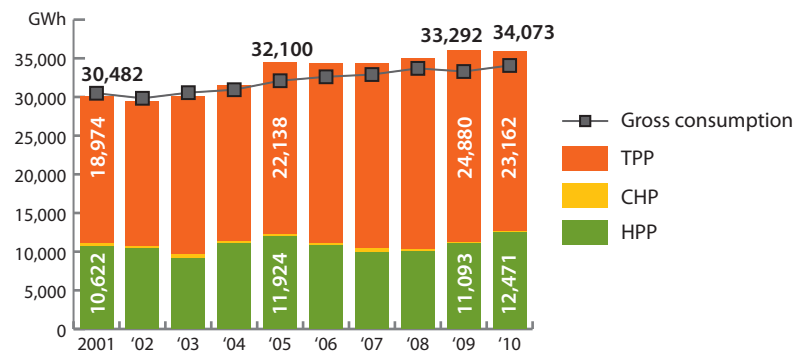
Year	Day	Hour	MW
2010	December 31st	18	6,579

Kosovo and Metohija included

Year	Day	Hour	MW
2010	December 31st	18	7,656

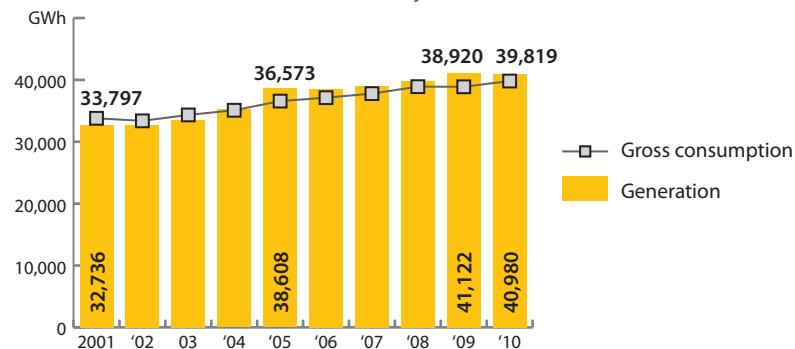
## GENERATION STRUCTURE AND GROSS CONSUMPTION

Kosovo and Metohija not included

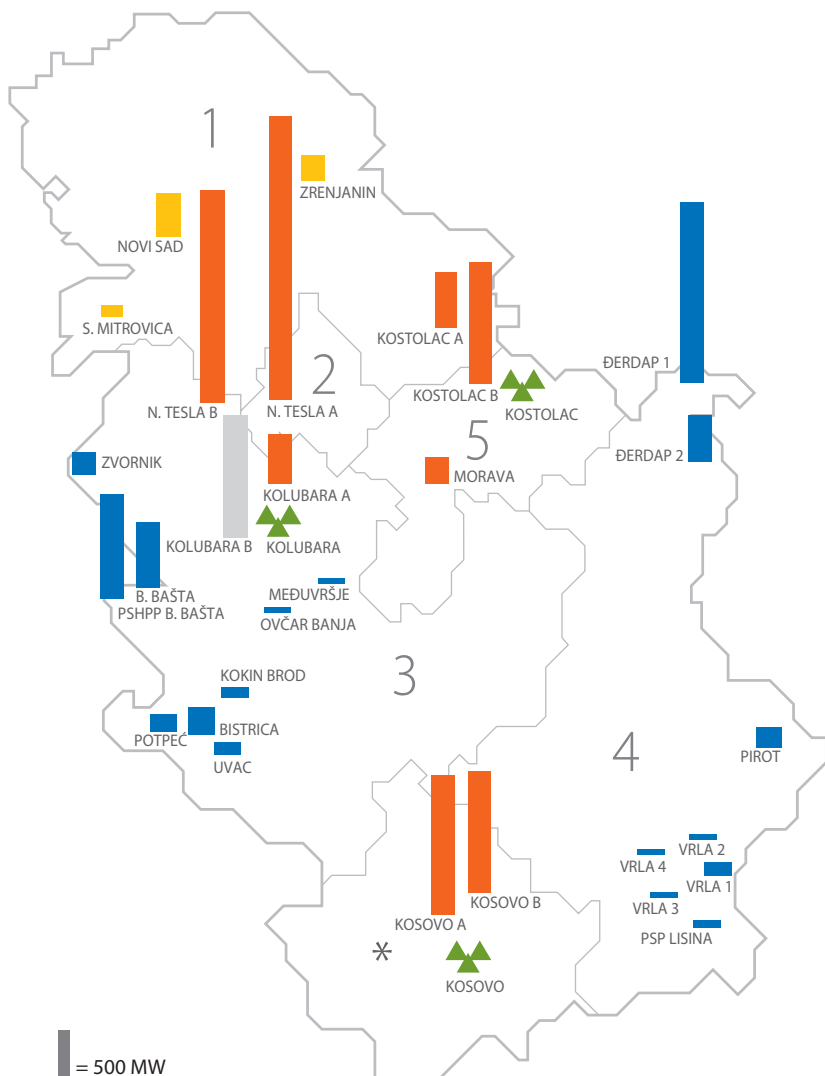


## GENERATION AND GROSS CONSUMPTION

Kosovo and Metohija included



# EPS INSTALLED CAPACITIES



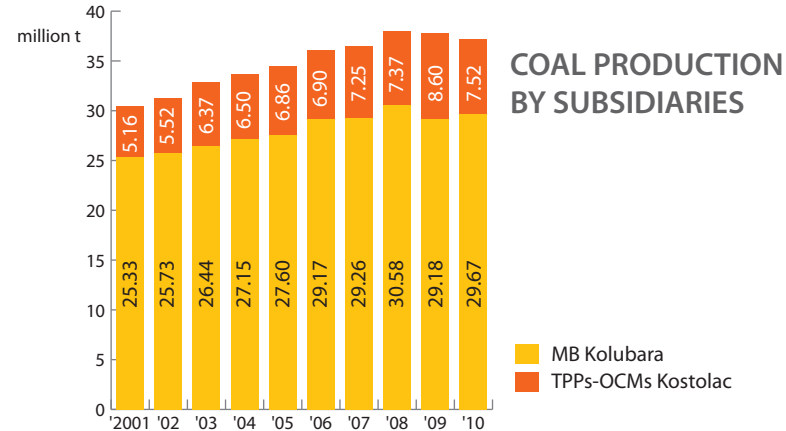
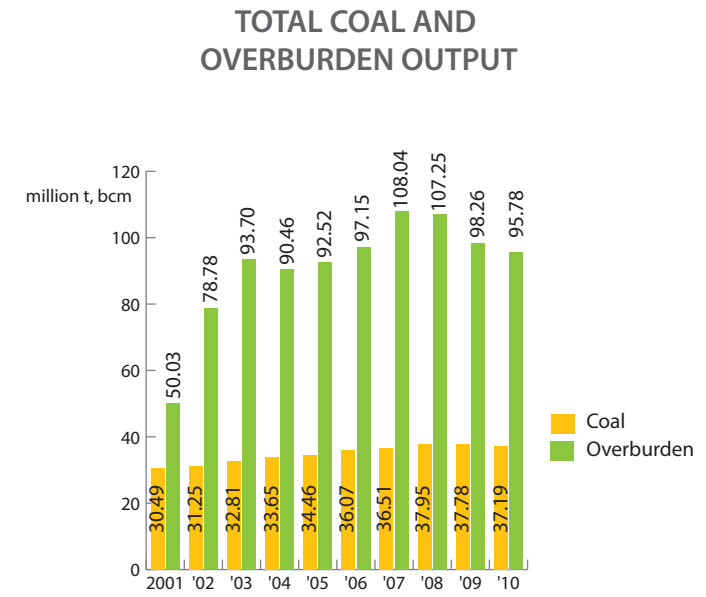
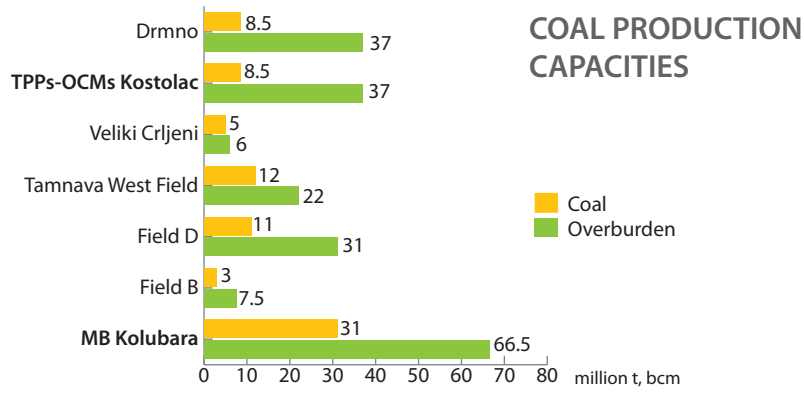
## Power plants and coal mines:

- TPP
- TPP UNDER CONSTRUCTION
- CHP
- HPP
- COAL MINE

## Electricity distribution areas:

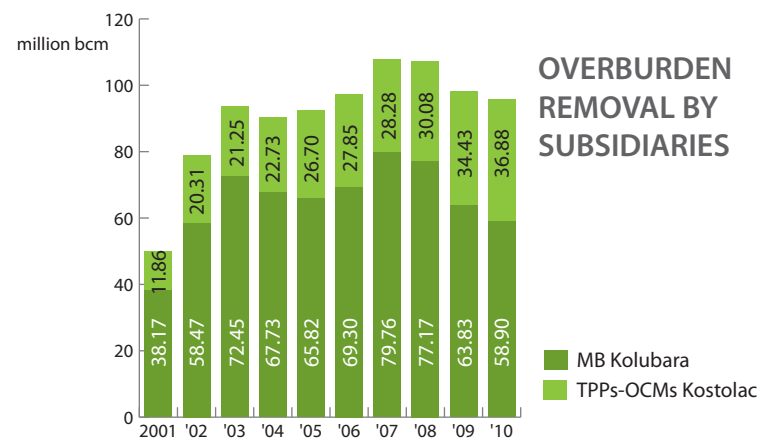
- 1\_Elektrovojvodina Ltd. Novi Sad
- 2\_Elektrodistribucija Beograd Ltd. Beograd
- 3\_Elektrosrbija Ltd. Kraljevo
- 4\_Jugoistok Ltd. Niš
- 5\_Centar Ltd. Kragujevac
- \*\_PE Elektrokosmet, Priština

\* As of June 1999, EPS does not operate its facilities on the territory of Kosovo and Metohija



### STRUCTURE OF SUPPLY OF THE PRODUCED COAL

(t)	MB Kolubara	TPPs-OCMs Kostolac	EPS
For TPPs	27,918,986	7,179,408	35,098,394
For drying	1,052,114	/	1,052,114
For industry	508,936	342,703	851,639
For heating plants	192,998	/	192,998
<b>TOTAL</b>	<b>29,673,034</b>	<b>7,522,111</b>	<b>37,195,145</b>



## ELECTRICITY SUPPLIED TO DISTRIBUTION SUBSIDIARIES

Distribution Subsidiary	Taken over from transmission	
	GWh	%
Elektrovojvodina	9,109	27.74
Elektrodistribucija Beograd	8,150	24.82
Elektrosrbija	7,498	22.84
Jugoistok	4,909	14.95
Centar	3,167	9.65
<b>TOTAL</b>	<b>32,833</b>	<b>100</b>

## STRUCTURE OF ELECTRICITY SALES BY VOLTAGE LEVELS

Voltage Level / Category of Consumption	Electricity Supplied		Number of buyers/measuring points
	GWh	%	
High Voltage - 110 kV	2,378	8.53	33
Midlle Voltage - 35 kV	740	2.66	158
Midlle Voltage - 10 (20) kV	4,577	16.42	3,842
Low Voltage (0.4 kV I Level)	3,100	11.12	45,782
Consumer Spending (0.4 kV II Level)	1,944	6.97	302,327
Consumer Spending – Households	14,645	52.54	3,123,188
Public Lighting	491	1.76	24,028
<b>TOTAL</b>	<b>27,875</b>	<b>100</b>	<b>3,499,358</b>

## STRUCTURE OF ELECTRICITY SALES BY SUBSIDIARIES AND VOLTAGE LEVELS

