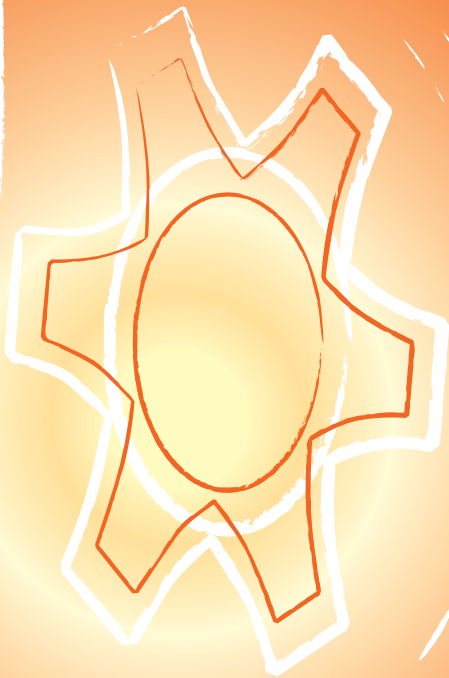


ELECTRIC POWER INDUSTRY OF SERBIA



TECHNICAL REPORT



GENERATION CAPACITIES

| | |
|----------------------------------|------------------|
| net output capacity | 7,124 MW |
| Kosovo and Metohija not included | |
| Kosovo and Metohija included | 8,359 MW* |

ELECTRICITY GENERATION

| | |
|----------------------------------|-------------------|
| Kosovo and Metohija not included | 36,050 GWh |
| Kosovo and Metohija included | 41,284 GWh |

COAL PRODUCTION

| | |
|----------------------------------|---------------------|
| Kosovo and Metohija not included | 40,290,397 t |
|----------------------------------|---------------------|

OVERBURDEN REMOVAL

| | |
|----------------------------------|------------------------|
| Kosovo and Metohija not included | 111,205,085 bcm |
|----------------------------------|------------------------|

EPS GROSS CONSUMPTION

| | |
|----------------------------------|-------------------|
| Kosovo and Metohija not included | 34,450 GWh |
| Kosovo and Metohija included | 40,215 GWh |

FINAL ELECTRICITY CONSUMPTION

| | |
|----------------------------------|-------------------|
| Kosovo and Metohija not included | 28,607 GWh |
|----------------------------------|-------------------|

NUMBER OF CUSTOMERS

| | |
|----------------------------------|------------------|
| Kosovo and Metohija not included | 3,525,418 |
| Total | |
| At high and middle voltage | 4,133 |
| At low voltage | 3,521,285 |

| POWER PLANT | Net output capacity MW |
|---------------------------------------|------------------------|
| TPP Nikola Tesla A | 1,502 |
| TPP Nikola Tesla B | 1,160 |
| TPP Kolubara | 245 |
| TPP Morava | 108 |
| TPP Kostolac A | 281 |
| TPP Kostolac B | 640 |
| TPP Kosovo A* | 617 |
| TPP Kosovo B* | 618 |
| THERMAL Power Plants | 5,171 |
| CHP Novi Sad | 208 |
| CHP Zrenjanin | 100 |
| CHP Sremska Mitrovica | 45 |
| COMBINED Heat and Power Plants | 353 |
| HPP Đerdap 1 | 1,058 |
| HPP Đerdap 2 | 270 |
| Vlasinske HPPs | 129 |
| HPP Pirot | 80 |
| HPP Bajina Bašta | 364 |
| PSHPP Bajina Bašta | 614 |
| HPP Zvornik | 96 |
| HPP Elektromorava | 13 |
| HPP Potpeć | 51 |
| HPP Bistrica | 102 |
| HPP Kokin Brod | 22 |
| HPP Uvac | 36 |
| HYDRO Power Plants | 2,835 |
| EPS POWER PLANTS | 8,359 |

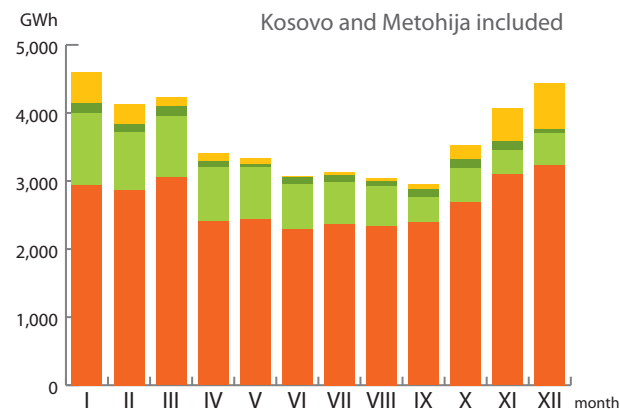
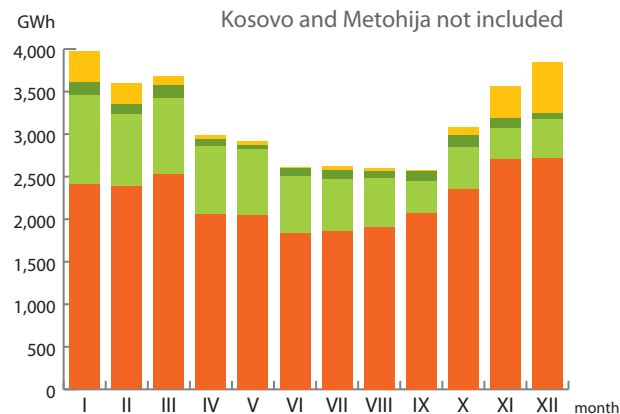
* As of June 1999, EPS does not operate its facilities on the territory of Kosovo and Metohija

EPS ELECTRICITY GENERATION

| POWER PLANT | GWh |
|---------------------------------------|---------------|
| TPP Nikola Tesla A | 11,058 |
| TPP Nikola Tesla B | 7,616 |
| TPP Kolubara | 1,066 |
| TPP Morava | 465 |
| TPP Kostolac A | 1,802 |
| TPP Kostolac B | 4,455 |
| TPP Kosovo A* | 2,014 |
| TPP Kosovo B* | 3,220 |
| THERMAL Power Plants | 31,696 |
| CHP Novi Sad | 339 |
| CHP Zrenjanin | 69 |
| CHP Sremska Mitrovica | 0 |
| COMBINED Heat and Power Plants | 408 |
| HPP Đerdap 1 | 4,710 |
| HPP Đerdap 2 | 1,435 |
| Vlasinske HPPs | 186 |
| HPP Pirot | 74 |
| HPP Bajina Bašta | 1,161 |
| PSHPP Bajina Bašta | 576 |
| HPP Zvornik | 365 |
| HPP Elektromorava | 55 |
| HPP Potpeć | 150 |
| HPP Bistrica | 330 |
| HPP Kokin Brod | 58 |
| HPP Uvac | 45 |
| Mini HPP | 35 |
| HYDRO Power Plants | 9,180 |
| TOTAL | 41,284 |

AVAILABLE ENERGY

MONTHLY GENERATION AND PROCUREMENTS



- Total TPPs
- Run-of-river HPPs + mini HPPs
- Reservoir HPPs
- Procurements

ACHIEVED ELECTRIC POWER BALANCE

Kosovo and Metohija not included



Total EPS generation at the outlet **36,050**



Kosovo and Metohija included



Total EPS generation at the outlet **41,284**



MAXIMUM PEAKLOAD

Kosovo and Metohija not included

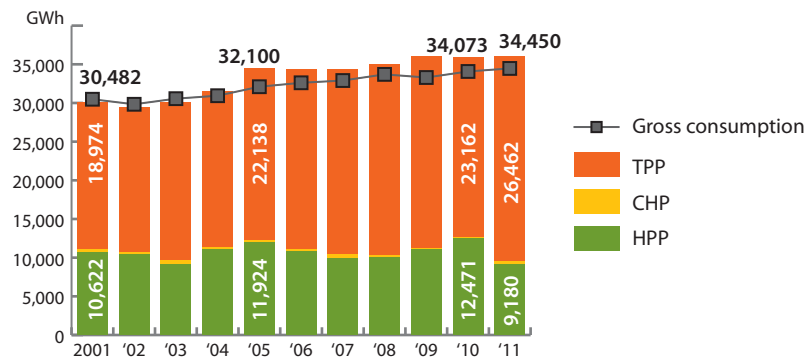
| Year | Day | Hour | MW |
|------|--------------|------|-------|
| 2011 | February 2nd | 19 | 6,372 |

Kosovo and Metohija included

| Year | Day | Hour | MW |
|------|--------------|------|-------|
| 2011 | February 2nd | 19 | 7,341 |

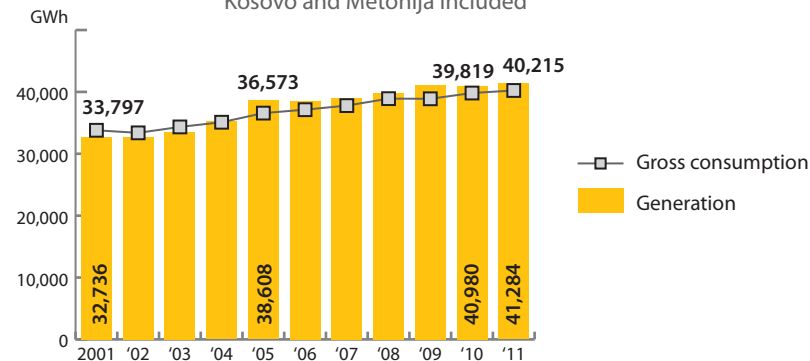
GENERATION STRUCTURE AND GROSS CONSUMPTION

Kosovo and Metohija not included

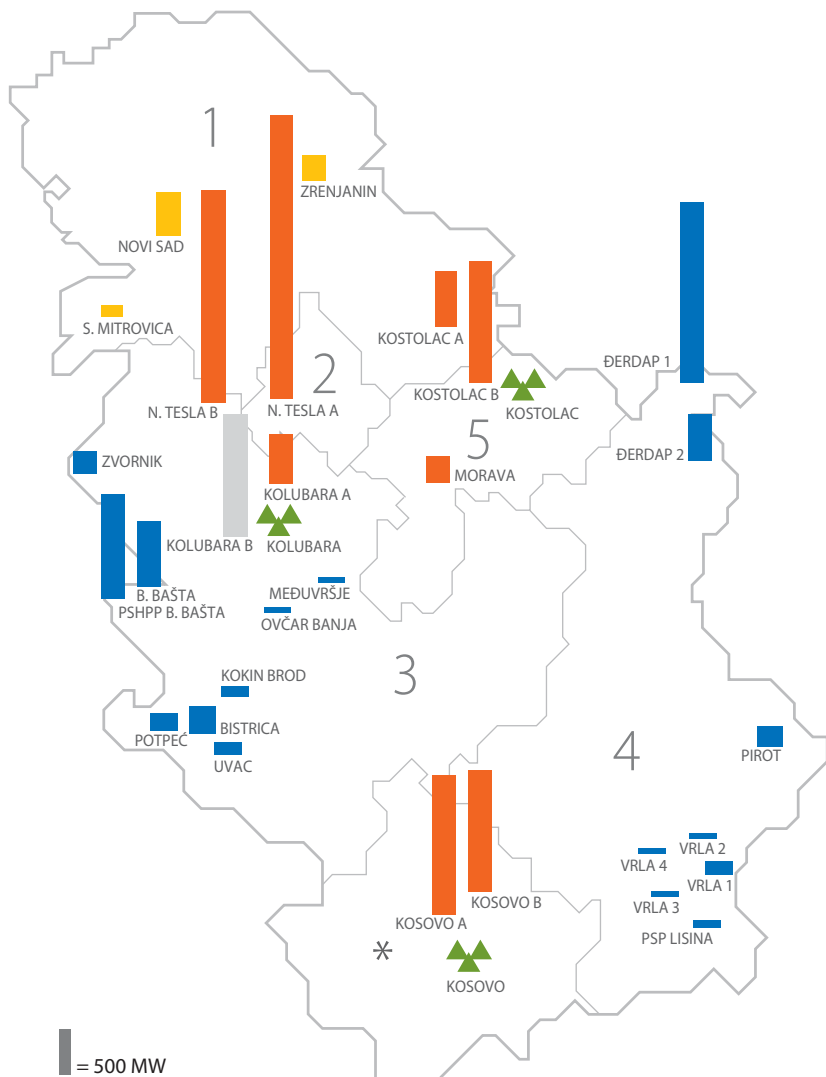


GENERATION AND GROSS CONSUMPTION

Kosovo and Metohija included



EPS INSTALLED CAPACITIES



1 bar = 500 MW

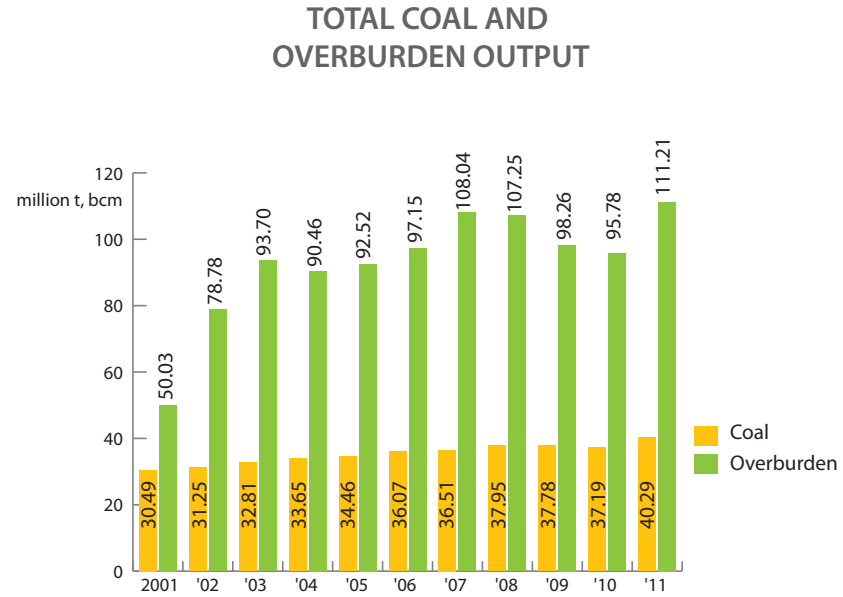
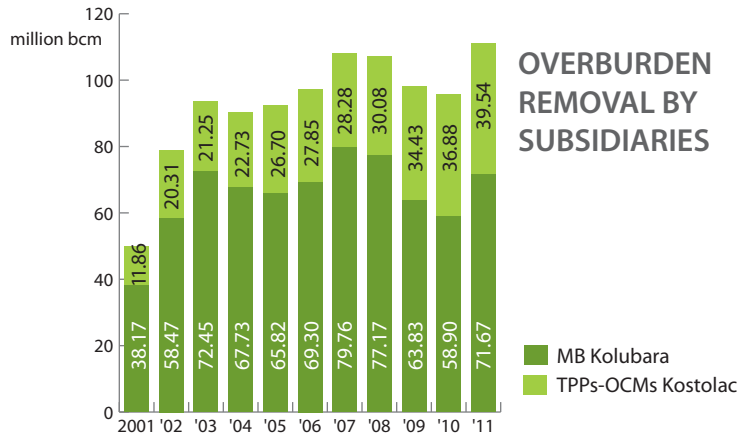
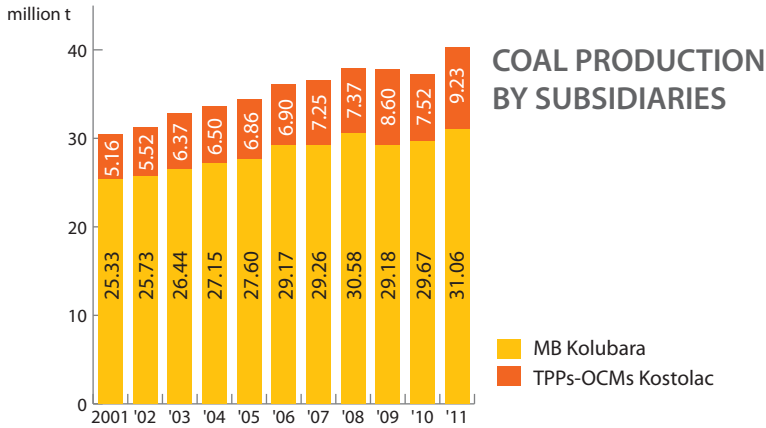
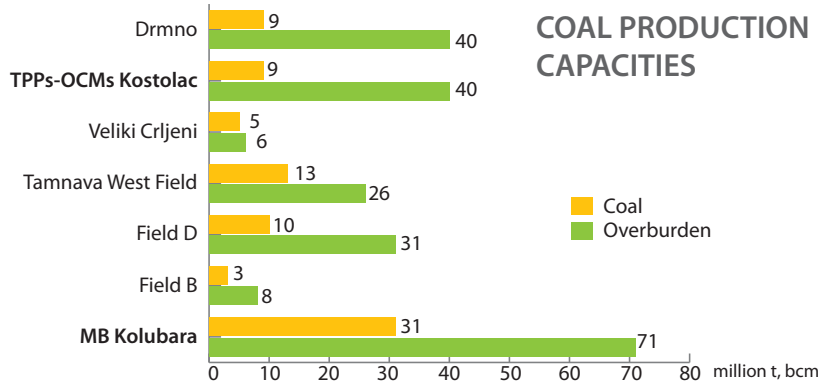
Power plants and coal mines:

- TPP
- TPP UNDER CONSTRUCTION
- CHP
- HPP
- COAL MINE

Electricity distribution areas:

- 1_Elektrovjvodina Ltd. Novi Sad
- 2_Elektrodistribucija Beograd Ltd. Beograd
- 3_Elektrosrbija Ltd. Kraljevo
- 4_Jugoistok Ltd. Niš
- 5_Centar Ltd. Kragujevac
- *_PE Elektrokosmet, Priština

* As of June 1999, EPS does not operate its facilities on the territory of Kosovo and Metohija



STRUCTURE OF SUPPLY OF THE PRODUCED COAL

| (t) | MB Kolubara | TPPs-OCMs Kostolac | EPS |
|--------------------|-------------------|--------------------|-------------------|
| For TPPs | 29,354,834 | 8,872,965 | 38,227,799 |
| For drying | 1,061,639 | / | 1,061,639 |
| For industry | 449,762 | 356,809 | 806,571 |
| For heating plants | 194,388 | / | 194,388 |
| TOTAL | 31,060,623 | 9,229,774 | 40,290,397 |

ELECTRICITY SUPPLIED TO DISTRIBUTION SUBSIDIARIES

| Distribution Subsidiary | Taken over from transmission | |
|-----------------------------|------------------------------|------------|
| | GWh | % |
| Elektrovojvodina | 9,236 | 27.83 |
| Elektrodistribucija Beograd | 8,175 | 24.63 |
| Elektrosrbija | 7,540 | 22.72 |
| Jugoistok | 5,018 | 15.12 |
| Centar | 3,218 | 9.70 |
| TOTAL | 33,187 | 100 |

STRUCTURE OF ELECTRICITY SALES BY VOLTAGE LEVELS

| Voltage Level / Category of Consumption | Electricity Supplied | | Number of buyers/ measuring points |
|---|----------------------|------------|------------------------------------|
| | GWh | % | |
| High Voltage - 110 kV | 2,580 | 9.07 | 33 |
| Middle Voltage - 35 kV | 832 | 2.93 | 160 |
| Middle Voltage - 10 (20) kV | 4,721 | 16.60 | 3,940 |
| Low Voltage (0.4 kV I Level) | 3,165 | 11.13 | 45,610 |
| Consumer Spending (0.4 kV II Level) | 1,973 | 6.94 | 305,352 |
| Consumer Spending – Households | 14,666 | 51.57 | 3,146,122 |
| Public Lighting | 501 | 1.76 | 24,201 |
| TOTAL | 28,438 | 100 | 3,525,418 |

STRUCTURE OF ELECTRICITY SALES BY SUBSIDIARIES AND VOLTAGE LEVELS

